

# SOLUTION FOR COOLING TOWER



SCALING



CORROSION



BIOCIDES

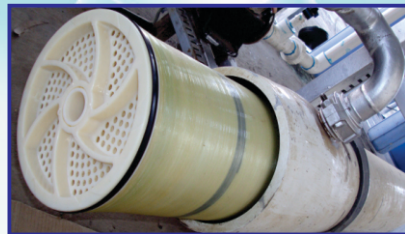


Before



After

CHILLER CORROSION INHIBITORS



RO CHEMICALS



SAND REMOVAL

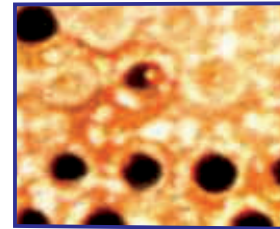
## SOLUTION FOR MOULDS



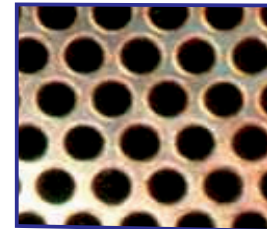
SCALING



CORROSION



BEFORE



AFTER

## DESCALING

### OUR PRESTIGIOUS CLIENTS



### SCALE GUARD HEAD OFFICE :

702, 703, Goyal Trade Centre,  
Shantivan, Borivali (East),  
Mumbai - 400066  
INDIA

Tel. : +91-022-28976547  
Mob. : +91-9321062241 / 9833103951  
Visit : [www.scaleguard.co.in](http://www.scaleguard.co.in)  
E-mail : [mitesh@scaleguard.co.in](mailto:mitesh@scaleguard.co.in)  
[yscaleguard@hotmail.com](mailto:yscaleguard@hotmail.com)  
[sales@scaleguard.co.in](mailto:sales@scaleguard.co.in)



# Total Water Management

[www.scaleguard.co.in](http://www.scaleguard.co.in)

## COMPANY PROFILE

Our Restless Quest for increasing productivity & quality made us focus on the most Important & Neglected Ingredient water. Which in turn gave birth to the company called SCALE GUARD WATER ENGINEERING that changed the way water was managed in the Plastic Industry.

It is no more surprising that effective cooling water system provision, operation & maintenance can improve the productivity considerably. This is proved at our customer end with improved capacity, quality of product, ease of operation & reduced cost.

## WHY SCALE GUARD ???

- 1. Edge Of Under Standing :** We exactly know when & where industry needs water treatment. We know importance of water treatment in different cooling system in moulds, machines & Auxiliaries.
- 2. Providing Total Solution :** We Provide 360° of Solution. Offering Chemicals or Plants cannot give desired results. It starts with cooling system design, Implementation, Water treatment Plants, Operation, services, energy savings and automation of water circulation in industries.
- 3. On Site Erection, Commissioning & Services :** We do not leave any stone unturned. With our vast experience & knowledge we complete our job on time with minimum involvement of customer. Our service expert visit your site on daily basis & look after operation of water treatment plant - dosing of chemicals-making daily report & quarterly reports to keep track of any variable control or to determine & solve the issue before it starts.
- 4. Global Approach :** We provide global opportunity for technological developments & bring it to the notice of our clients.

## PLUMBING DESIGN, AUDITS & SITE EXECUTION

### Plumbing Design Consultation includes :

- Flow calculation for Machines & Moulds including utility
- Sizing of Pumps
- Sizing of Pipes
- Piping Design Layout
- Cooling Tower & Chiller Sizing
- Cooling Tank Sizing & Design
- List of Plumbing Material

### Plumbing System Audits :

- Trouble Shooting of existing Cooling Systems
- Technical assistance to evaluate present system and its efficiency



[www.scaleguard.co.in](http://www.scaleguard.co.in)

## Sand Filters & Softner

No.	Model No.	Resin Capacity (Ltr.)	Flow Rate (LPH)
1	SG - 300	275	4500
2	SG - 445	400	6000
3	SG - 731	700	8000
4	SG - 1020	1000	8000
5	SG - 1300	1200	8000
6	SG - 1875	1800	10000
7	SG - 2500	2300	12000
8	SG - 3000	2800	12000



## R.O. Plant

No.	Model No.	Product Flow (Ltr/hr.)
1	SGRO - 250	250
2	SGRO - 500	500
3	SGRO - 1000	1000
4	SGRO - 2000	2000
5	SGRO - 3000	3000
6	SGRO - 5000	5000
7	SGRO - 10000	10000



## INTELLIGENT RO - COOLER



## STP & ETP PLANT



## VARIABLE SPEED PUMP SYSTEMS

Our Variable speed pump systems enable excellent energy savings in applications such as "Chilled water circulation". When the plant does not operate at full capacity, the pumps still operate at full RPM resulting in wastage of electricity, Whenever there is variation in the pump load the pump RPM is varied while keeping the pressure constant.

### Features & Benefits

- ✓ Excellent energy savings
- ✓ Complete pump & motor protection
- ✓ Adjustable pressure set point
- ✓ Low wear & tear of pump & motor parts
- ✓ Constant high pressure for all equipment
- ✓ Soft start & stop eliminates water hammer / cavitation
- ✓ Lead / Lag & alteration of pumps in multi-pump systems



## INTELLIGENT PUMP CONTROL PANELS

Technologically advanced yet economically priced Intelligent pump control panels, designed to protect your pumps against harmful electrical & hydraulic conditions:

- ✓ Available from 1HP to 100 HP
- ✓ Dry run protection
- ✓ Over current (overload) protection
- ✓ Over/under voltage protection
- ✓ Phase loss/reversal/unbalance protection
- ✓ Earth fault, over heat, low PF protection

